



System Performance Summary for FY2011/12

The following reports summarizes the operational performance of all Yuma County Intergovernmental Transportation Authority (YCIPTA) local transit services provided on behalf of Yuma Metropolitan Planning Organization (YMPO) for Fiscal Year (FY) 2011-12 and compares these results to the route level performance goals approved by the Board of Directors. Attachment summarizes route level performance for all YCIPTA services operating in FY 2011-12.

Overall, YCIPTA buses carried 294,405 passengers' trips and operated about 23,966 revenue hours in FY 2011-12. The ridership was increased by 28,112 additional passenger trips due to five new routes implemented in January 2012, as well as a sixth route being implemented in June.

Performance Goals

Performance goals at the route level are measured in both productivity (passengers per hour and service type) and cost effectiveness (subsidy per passenger trip and service type). These goals have traditionally been assigned and monitored by program.

Table 1 below provides a summary of the updated route level performance goals that are organized by typology.

Table 1: Productivity and Subsidy Goals by Service Type

Service Type	Routes	Passenger Trips	Subsidy Per Passenger Trip	Passengers Per Hour
Urban Fixed	1, 2, 4, 95, College Shuttle	248,695	\$3.39	15.13
Urban Flex	6	22,826	\$7.10	7.35
Rural Flex	6A, 7, 8,	9,568	\$9.63	4.95
Rural	Grey, 5, 9	12,435	\$9.72	5.43
Special Service	NightCAT/Shuttles	5,026	\$2.71	17.57
Demand Response	Greater Yuma Area Dial-A-Ride	14,307	\$29.13	1.92

Table 2 provides a detailed summary of annual FY 2011-12 performance data by program, route, and service typology.

Figure 1 shows the annual performance by program in passengers per hour for the previous year.

Using the goals identified in Table 1, Urban Fixed and Rural Flex service typology groups collectively met their passengers per hour goal.



FY 2011-2012 System Performance Report							
Bus Route	Passenger Trips	Revenue Hours	Operational Cost for Route	Fare Revenue Collected	Pass./ Rev.Veh Hr	Subsidy/ Passenger	Farebox Recovery
Urban Fixed	248,695	16,434.92	\$ 843,403.27	\$ 269,545.82	15.13	\$3.39	32%
Red 1	16,107	1,783.86	\$ 84,996.27	\$ 10,697.00	9.03	\$5.28	13%
Orange 2	28,036	3,235.38	\$ 166,233.31	\$ 16,187.45	8.67	\$5.93	10%
Green 4	45,767	3,536.64	\$ 183,652.11	\$ 32,481.30	12.94	\$4.01	18%
Yellow 95	155,962	7,691.04	\$ 397,932.26	\$ 209,530.72	20.28	\$2.55	53%
College Shuttle	2,823	188.00	\$ 10,589.32	\$ 649.35	15.02	\$3.75	6%
Urban Flex	22,826	3,105.29	\$ 162,116.52	\$ 5,973.16	7.35	\$7.10	4%
Purple 6	22,826	3,105.29	\$ 162,116.52	\$ 5,973.16	7.35	\$7.10	4%
Rural	12,435	2,288.58	\$ 120,866.74	\$ 1,078.26	5.43	\$9.72	1%
Grey	9,470	1,452.36	\$ 80,830.60	\$ 97.76	6.52	\$8.54	0%
Silver 9	2,281	547.34	\$ 26,074.57	\$ 271.50	4.17	\$11.43	1%
Blue	684	288.88	\$ 13,961.57	\$ 709.00	2.37	\$20.41	5%
Rural Flex	9,568	1,934.35	\$ 92,131.89	\$ 4,218.50	4.95	\$9.63	5%
Purple 6A	1,333	302.01	\$ 14,345.81	\$ 377.50	4.41	\$10.76	3%
Violet 7	7,282	1,338.34	\$ 63,777.72	\$ 2,213.00	5.44	\$8.76	3%
Gold 8	953	294.00	\$ 14,008.36	\$ 1,628.00	3.24	\$14.70	12%
Special Services	5,026	286.07	\$ 13,617.57	\$ 21.00	17.57	\$2.71	0%
NightCAT/Shuttles	5,026	286.07	\$ 13,617.57	\$ 21.00	17.57	\$2.71	0%
Demand Response	14,307	7,444.91	\$ 416,723.09	\$ 30,053.14	1.92	\$29.13	7%
Greater Yuma Area Dial-A-Ride	14,307	7,444.91	\$ 416,723.09	\$ 30,053.14	1.92	\$29.13	7%

Figure 2 and Figure 3 provide the FY 2011-12 break down of the productivity and respective performance goals by service typology at the individual route level. The majority of the Urban Fixed, and Demand Response routes met their passenger per hour goals.

Subsidy per passenger goals was not met for all or most of Rural/Rural Flex routes. Subsidy goals were met for all of the other local routes.

Yellow Route 95 was the most productive Urban Fixed route service, carrying an average of 20.28 passengers per hour with a \$2.55 average subsidy per passenger. Grey Route was the best performing Rural Route carrying an average of 6.52 passengers per hour with an \$8.54 average subsidy per passenger.

Purple Route 6A and Gold Route 8 both had low for passengers per hour and had subsidies of \$10.76 and \$14.70 per passenger respectfully.



Figure 1: Passengers per Revenue Hour by Program

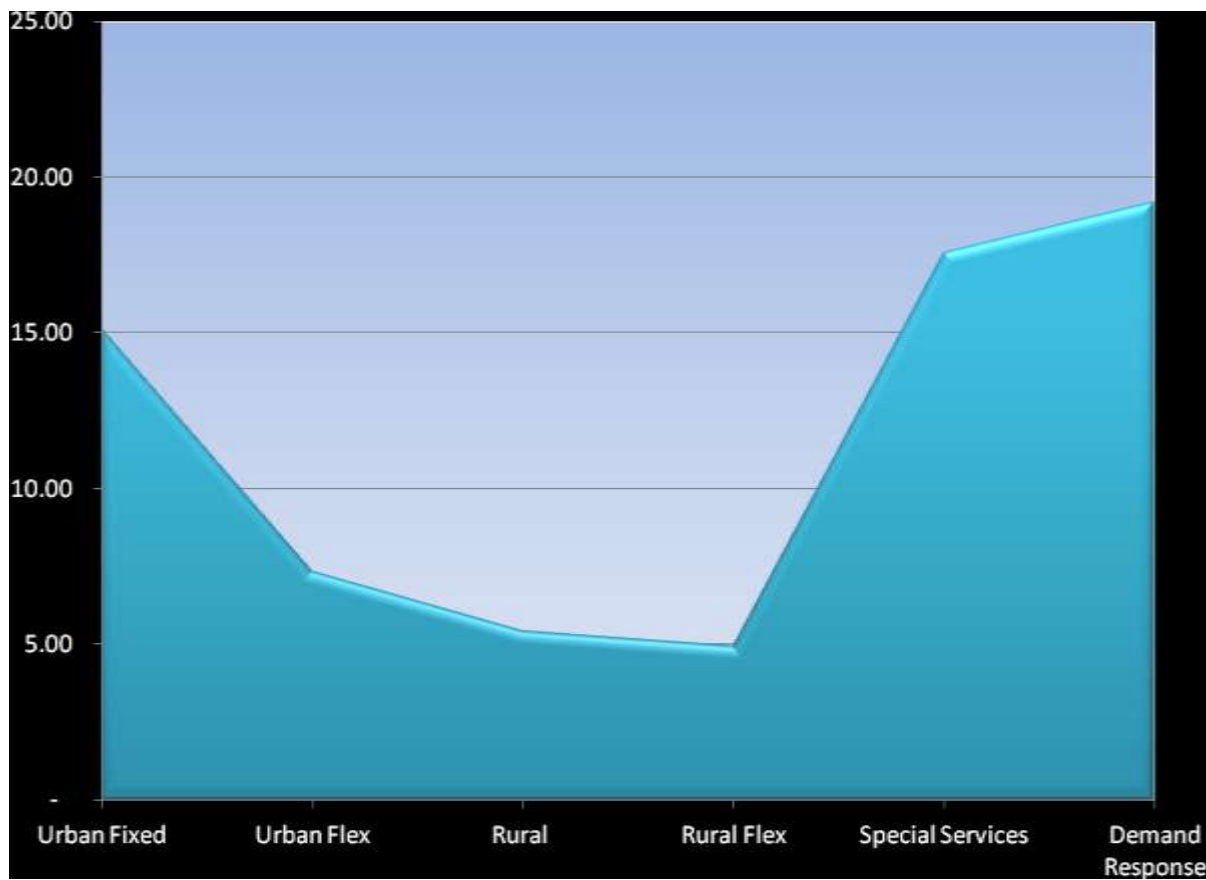




Figure 2: Passenger Per Revenue Hour by Route

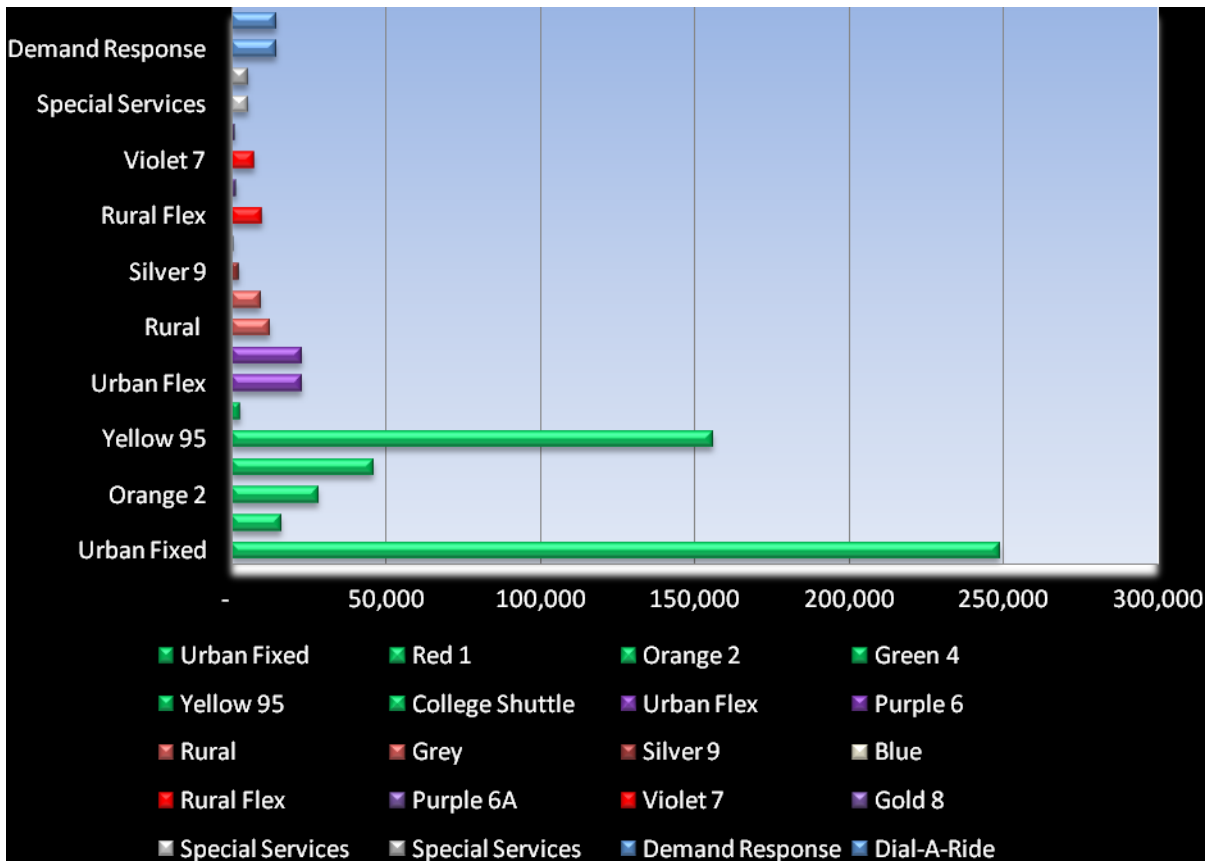
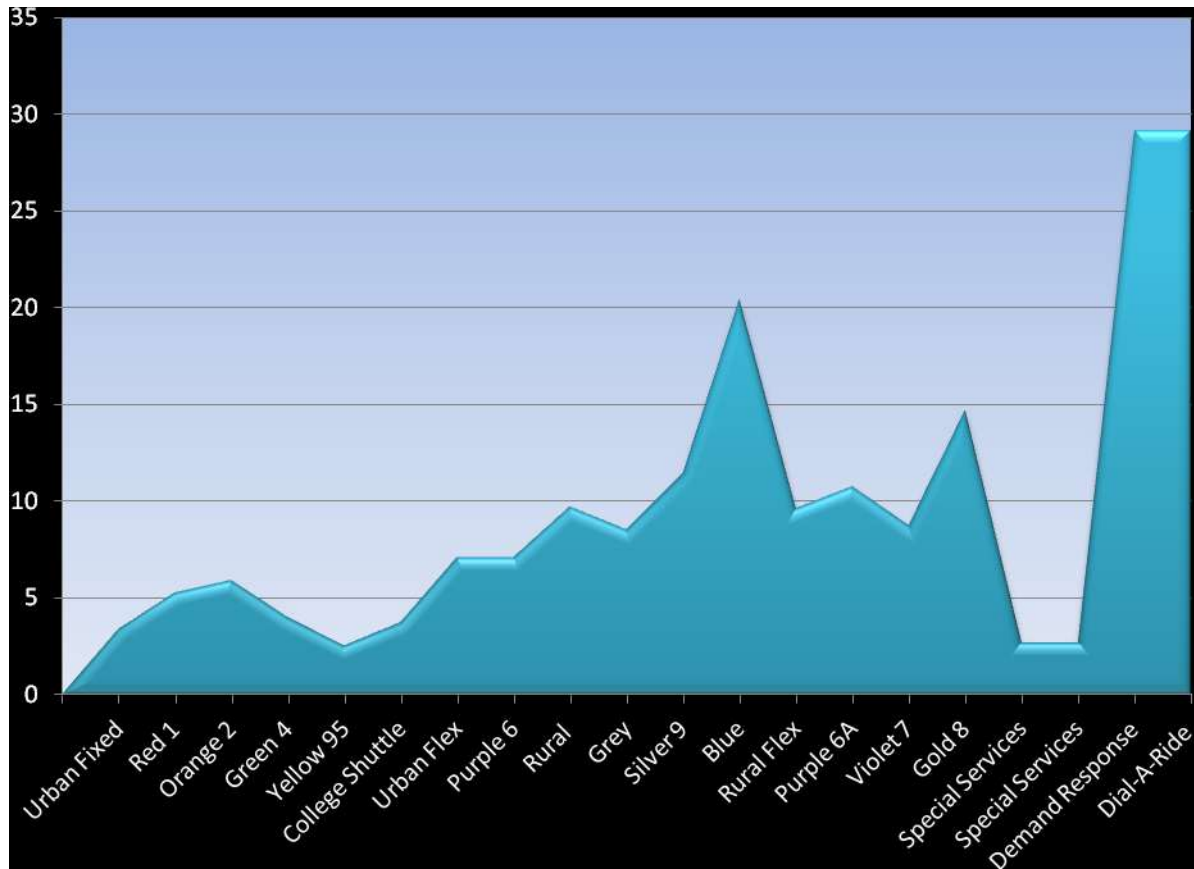




Figure 3: Subsidy per Passenger by Route





Attachment A: Route Profiles and Descriptions.

Red Route 1 - Central Yuma Circulator - Counter-Clockwise Loop throughout the City of Yuma via 4th Avenue via Paradise Casino and limited service to Winterhaven, CA. Route started on January 9, 2012.

Orange Route 2 - Colleges/Fortuna Foothills - Yuma Palms Regional Center to Fortuna Foothills via Arizona Western College/Northern Arizona University/University of Arizona. Route changed on January 9, 2012.

Green Route 4 - Central Yuma Circulator - Clockwise Loop throughout the City of Yuma via Pacific Avenue. Route changed on January 9, 2012.

Blue Route 5 - Quechan Shuttle - Counter Clockwise Loop throughout the Quechan/Fort Yuma Indian Reservation serving Paradise Casino, Quechan Casino Resort and Winterhaven, CA. Route started on June 1, 2012.

Purple Route 6/6A - Avenue A - Cocopah RV Resort and North Reservation to West Yuma Transfer Hub with limited service extended on weekdays and Saturday to Cocopah West Reservation. Route changed on January 9, 2012.

Violet Route 7 - Cocopah Shuttle - West Cocopah Reservation to Cocopah Casino via Cocopah East Reservation. *(Operates Monday-Friday only)*. Route started on January 9, 2012.

Gold Route 8 - Interstate 8/Wellton - Yuma Palms Regional Center to Wellton via Interstate 8 and Fortuna Foothills. *(Operates Monday - Friday only)*. Route started on January 9, 2012.

Silver Route 9 - AWC/San Luis College Connector - Arizona Western College/Northern Arizona University/University of Arizona to San Luis via SR 195. *(Operates Monday-Thursday when college is in session)*. Route started on January 9, 2012.

Yellow Route 95 - Highway 95 South - Yuma Palms Regional Center to San Luis via Somerton, Cocopah Casino, and Gadsden. Route changed on January 9, 2012.

NightCAT - Arizona Western College/Northern Arizona University/University of Arizona night time shuttle. *(Operates when college is in session)*. Route started on January 9, 2012.

HolidayCAT - Limited service between Arizona Western College/Northern Arizona University/University of Arizona to Yuma Palms Regional Center on Dr. Martin Luther King, Jr. Day, President's Day, Memorial Day, Independence Day, Labor Day and Veterans Day. Route started on January 9, 2012. **Service has not operated since its inception.**

Greater Yuma Area Dial-A-Ride - ADA complementary paratransit service for persons with disabilities unable to ride YCAT buses due to a disability. Service changed on January 9, 2012.

College Shuttle – Service From Yuma Palms Regional Center to Arizona Western College/Northern Arizona University/University of Arizona. *(Operates when college is in session)*. Route ended on December 15, 2011.

Grey Route - West Cocopah Reservation to Cocopah Casino via Cocopah East Reservation. *(Operates Monday-Friday only)*. Route ended on January 7, 2012.



1
RED



Post changes: 1/9/2012-6/30/2012

Red Route 1 - Central Yuma Circulator - Counter-Clockwise Loop throughout the City of Yuma via 4th Avenue via Paradise Casino and limited service to Winterhaven, CA. This route operates every 60 minutes, Monday through Friday between 6:30 a.m. and 7:30 p.m. and on Saturday between 9:30 a.m. and 5:30 p.m. On Wednesday, the route starts 10 minutes early to connect to IVT Route 3 and ends one hour later upon request.

	Passengers			Revenue Hours			Revenue Miles		
	Annual	Avg Monthly	Ave Daily	Annual	Avg Monthly	Ave Daily	Annual	Avg Monthly	Ave Daily
Weekday	14,868	2,478	115	1,587	264	12	28,341	4,723	219
Saturday	1,239	207	47	197	33	7	3,560	593	134
Total	16,107	1,342	162	1,784	149	20	31,901	5,317	353

	Operating Costs			Passenger Revenue			Operating Subsidy		
	Annual	Avg Monthly	Ave Daily	Annual	Avg Monthly	Ave Daily	Annual	Avg Monthly	Ave Daily
Weekday	\$75,337	\$12,556	\$582	\$9,549	\$1,591	\$74	\$5,788	\$10,965	\$5008
Saturday	\$9,339	\$1,557	\$352	\$1,149	\$191	\$43	\$8,191	\$1,365	\$309
Total	\$84,676	\$14,113	\$934	\$10,697	\$1,783	\$117	\$73,979	\$12,330	\$817

	Pass Per Rev Hour	Subsidy Per Pass	Cost Per Pass	Farebox Recovery
Weekday	9	\$5.07	\$47.48	12.7%
Saturday	6	\$7.54	\$47.41	12.3%
Total	9	\$5.26	\$47.47	12.6%



2
ORANGE



Pre Changes: 7/1/2011 – 1/7/2012



Post Changes: 1/9/2012-6/30/2012

Orange Route 2 - Colleges/Fortuna Foothills - Yuma Palms Regional Center to Fortuna Foothills via Arizona Western College/Northern Arizona University/University of Arizona. This route operates every 60 minutes, Monday through Thursday between 6:30 a.m. and 7:30 p.m., Friday between 6:30 a.m. and 6:30 p.m. and on Saturday between 9:30 a.m. and 5:30 p.m. Selected trips travel via Yuma Fun Factory. This route previously operated from Yuma Palms Regional Center to Wellton via Fortuna Foothills and Arizona Western College, Monday through Saturday from 5:55 am to 5:55 pm every 75 minutes.

	Passengers			Revenue Hours			Revenue Miles		
	Annual	Avg Monthly	Ave Daily	Annual	Avg Monthly	Ave Daily	Annual	Avg Monthly	Ave Daily
Weekday	26,347	2,196	102	2,701	225	10	80,182	6,682	310
Saturday	1,689	141	32	535	45	10	14,182	1,182	268
Total	28,036	2,336	134	3,235	270	21	94,364	7,864	577

	Operating Costs			Passenger Revenue			Operating Subsidy		
	Annual	Avg Monthly	Ave Daily	Annual	Avg Monthly	Ave Daily	Annual	Avg Monthly	Ave Daily
Weekday	\$137,778	\$11,482	\$532	\$14,607	\$1,217	\$56	\$123,172	\$10,264	\$476
Saturday	\$28,144	\$2,345	\$531	\$1,703	\$142	\$32	\$26,441	\$2,203	\$499
Total	\$165,922	\$13,827	\$1,063	\$16,310	\$1,359	\$89	\$149,612	\$12,468	\$974

	Pass Per	Subsidy	Cost	Farebox
	Rev Hour	Per Pass	Per Pass	Recovery
Weekday	9.76	\$5.23	\$51.02	10.6%
Saturday	3.16	\$16.66	\$52.64	6.1%
Total	8.67	\$5.92	\$51.28	9.8%



4
GREEN



Pre Changes: 7/1/2011-1/7/2012



Post Changes: 1/9/2012-6/30/2012

Green Route 4 - Central Yuma Circulator - Clockwise Loop throughout the City of Yuma via Pacific Avenue. This route operates every 60 minutes, Monday through Friday between 6:30 a.m. and 7:30 p.m. and on Saturday between 9:30 a.m. and 5:30 p.m. This route previously operated Monday through Saturday from 5:55 am to 5:55 pm every 75 minutes.

	Passengers			Revenue Hours			Revenue Miles		
	Annual	Avg Monthly	Ave Daily	Annual	Avg Monthly	Ave Daily	Annual	Avg Monthly	Ave Daily
Weekday	41,605	3,467	161	2,919	243	11	58,427	4,869	226
Saturday	4,162	347	79	618	51	12	10,452	871	197
Total	45,767	3,814	239	3,537	295	23	68,879	5,740	423

	Operating Costs			Passenger Revenue			Operating Subsidy		
	Annual	Avg Monthly	Ave Daily	Annual	Avg Monthly	Ave Daily	Annual	Avg Monthly	Ave Daily
Weekday	\$153,051	\$12,754	\$591	\$28,435	\$2,370	\$110	\$124,616	\$10,385	\$481
Saturday	\$30,304	\$2,525	\$572	\$4,255	\$355	\$80	\$26,049	\$2,171	\$491
Total	\$183,355	\$15,280	\$1,163	\$32,690	\$2,724	\$190	\$150,665	\$12,555	\$973

	Pass Per Rev Hour	Subsidy Per Pass	Cost Per Pass	Farebox Recovery
Weekday	14.25	\$3.68	\$52.44	18.6%
Saturday	6.73	\$7.28	\$49.04	14.0%
Total	12.94	\$4.01	\$51.84	17.8%



6
PURPLE



Pre Changes: 7/1/2011-1/7/2012



Post Changes: 1/9/2012-6/30/2012

Purple Route 6 - Avenue A - Cocopah RV Resort and North Reservation to West Yuma Transfer Hub. This route operates every 60 minutes, Monday through Friday between 7:00 a.m. and 5:30 p.m. This route previously operated from Cocopah RV Resort and North Cocopah Reservation to West Cocopah Reservation from 6:00 am to 5:55 pm, Monday through Saturday every 75 minutes.

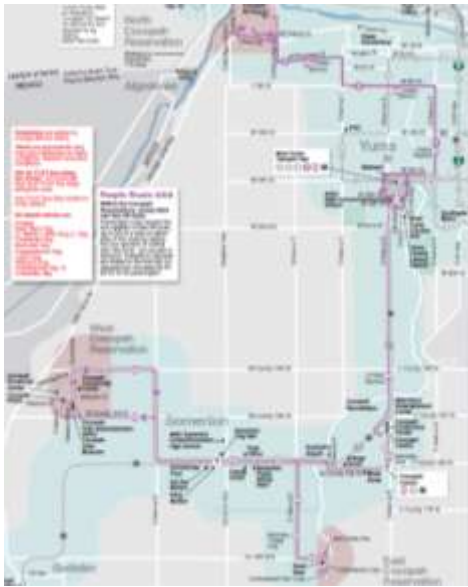
	Passengers			Revenue Hours			Revenue Miles		
	Annual	Avg Monthly	Ave Daily	Annual	Avg Monthly	Ave Daily	Annual	Avg Monthly	Ave Daily
Weekday	20,075	1,673	78	2,705	225	10	55,250	4,604	213
Saturday	2,751	459	104	393	66	15	12,219	1,018	231
Total	23,493	1,958	181	3,098	258	25	67,469	5,622	444

	Operating Costs			Passenger Revenue			Operating Subsidy		
	Annual	Avg Monthly	Ave Daily	Annual	Avg Monthly	Ave Daily	Annual	Avg Monthly	Ave Daily
Weekday	\$139,618	\$11,635	\$539	\$5,761	\$480	\$22	\$133,857	\$11,155	\$517
Saturday	\$21,918	\$1,827	\$414	\$335	\$56	\$13	\$21,583	\$1,799	\$407
Total	\$161,536	\$13,461	\$953	\$6,096	\$508	\$35	\$155,441	\$12,953	\$924

	Pass Per Rev Hour	Subsidy Per Pass	Cost Per Pass	Farebox Recovery
Weekday	7.42	\$6.95	\$51.61	4.1%
Saturday	7.00	\$7.97	\$55.73	1.5%
Total	7.58	\$6.08	\$52.14	3.8%



6A
PURPLE



Post Changes: 1/9/2012-1/6/2012

Purple Route 6A - Avenue A - Cocopah RV Resort and North Reservation to West Yuma Transfer Hub with limited service extended on weekdays and Saturday to Cocopah West Reservation. This route operates one trip, Monday through Friday in the a.m. and p.m.. and on Saturday between 10:00 a.m. and 5:00 p.m. every two hours.

	Passengers			Revenue Hours			Revenue Miles		
	Annual	Avg Monthly	Ave Daily	Annual	Avg Monthly	Ave Daily	Annual	Avg Monthly	Ave Daily
Weekday	-	-	-	137	23	1	-	-	-
Saturday	742	124	6	172	29	6	4,079	680	154
Total	742	124	6	309	51	7	4,079	680	154

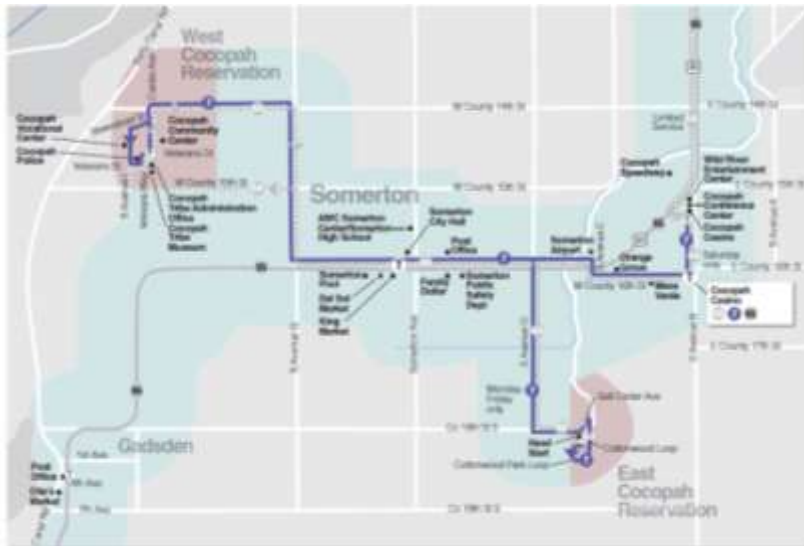
	Operating Costs			Passenger Revenue*			Operating Subsidy*		
	Annual	Avg Monthly	Ave Daily	Annual	Avg Monthly	Ave Daily	Annual	Avg Monthly	Ave Daily
Weekday	\$6,475	\$540	-	-	-	-	\$6,475	\$1,079	\$50
Saturday	\$8,154	\$1,359	\$308	\$402	\$67	\$15	\$7,753	\$1,292	\$293
Total	\$14,629	\$1,899	\$308	\$402	\$67	\$15	\$14,228	\$2,371	\$343

	Pass Per Rev Hour	Subsidy Per Pass	Cost Per Pass	Farebox Recovery
Weekday	-	-	-	-
Saturday	4.31	\$10.99	\$47.41	4.9%
Total	4.31	\$10.99	\$47.36	2.7%

*Weekday revenue is consolidated under Purple Route 6 as it was not segregated for Purple Route 6A.



7
VIOLET



Post Changes: 1/9/2012 – 6/30/2012

Violet Route 7 - Cocopah Shuttle - West Cocopah Reservation to Cocopah Casino via Cocopah East Reservation. This route operates every 60 minutes, Monday through Friday between 7:00 a.m. and 6:30 p.m. This route replaces the Grey Route.

	Passengers			Revenue Hours			Revenue Miles		
	Annual	Avg Monthly	Ave Daily	Annual	Avg Monthly	Ave Daily	Annual	Avg Monthly	Ave Daily
Weekday	7,251	1,209	56	1,283	214	10	34,324	5,721	265
Saturday*	31	5	1	55	9	2	-	-	-
Total	7,282	607	57	1,338	112	12	34,324	5,721	265

	Operating Costs			Passenger Revenue			Operating Subsidy		
	Annual	Avg Monthly	Ave Daily	Annual	Avg Monthly	Ave Daily	Annual	Avg Monthly	Ave Daily
Weekday	\$63,540	\$10,590	\$491	\$2,185	\$364	\$17	\$61,356	\$10,226	\$474
Saturday	-	-	-	\$29	\$5	\$1	(\$29)	(\$5)	(\$1)
Total	\$63,540	\$10,590	\$491	\$2,213	\$369	\$18	\$61,327	\$10,221	\$473

	Pass Per Rev Hour	Subsidy Per Pass	Cost Per Pass	Farebox Recovery
Weekday	5.65	\$8.76	\$49.51	3.4%
Saturday	0.57	-	-	-
Total	5.44	\$8.73	\$47.48	3.5%

*Saturday service operated on accident by First Transit during the week of January 9, 2012. YCIPTA was not charged.



8
GOLD



Post Changes: 1/9/2012-6/30/2012

Gold Route 8 - Interstate 8/Wellton - Yuma Palms Regional Center to Wellton via Interstate 8 and Fortuna Foothills. This route operates one a.m. and one p.m. trip, Monday through Saturday.

	Passengers			Revenue Hours			Revenue Miles		
	Annual	Avg Monthly	Ave Daily	Annual	Avg Monthly	Ave Daily	Annual	Avg Monthly	Ave Daily
Weekday	803	134	6	223	37	2	8,755	1,459	68
Saturday	150	25	6	71	12	3	1,920	320	72
Total	953	79	12	294	24	4	10,675	1,779	140

	Operating Costs			Passenger Revenue			Operating Subsidy		
	Annual	Avg Monthly	Ave Daily	Annual	Avg Monthly	Ave Daily	Annual	Avg Monthly	Ave Daily
Weekday	\$10,563	\$1,760	\$82	\$1,396	\$233	\$11	\$9,167	\$1,528	\$71
Saturday	\$3,392	\$565	\$128	\$233	\$39	\$9	\$3,159	\$527	\$119
Total	\$13,955	\$2,326	\$210	\$1,628	\$271	\$20	\$12,327	\$2,054	\$190

	Pass Per Rev Hour	Subsidy Per Pass	Cost Per Pass	Farebox Recovery
Weekday	3.61	\$13.15	\$47.45	13.2%
Saturday	2.10	\$22.61	\$47.53	6.9%
Total	3.24	\$14.64	\$47.47	11.7%



9
 SILVER



Post Changes: 1/9/2012-6/30/2012

Silver Route 9 - AWC/San Luis College Connector - Arizona Western College/Northern Arizona University/University of Arizona to San Luis via SR 195. This route operates three northbound and two southbound trips in the a.m. and p.m. peak periods, Monday through Friday.

	Passengers			Revenue Hours			Revenue Miles		
	Annual	Avg Monthly	Ave Daily	Annual	Avg Monthly	Ave Daily	Annual	Avg Monthly	Ave Daily
Weekday	2,281	380	18	547	91	4	20,188	3,365	130
Saturday	-	-	-	-	-	-	-	-	-
Total	2,281	380	18	547	91	4	20,188	3,365	130

	Operating Costs			Passenger Revenue			Operating Subsidy		
	Annual	Avg Monthly	Ave Daily	Annual	Avg Monthly	Ave Daily	Annual	Avg Monthly	Ave Daily
Weekday	\$25,977	\$4,330	\$201	\$272	\$45	\$2	\$25,706	\$4,284	\$199
Saturday	-	-	-	-	-	-	-	-	-
Total	\$25,977	\$4,330	\$201	\$272	\$45	\$2	\$25,706	\$4,284	\$199

	Pass Per Rev Hour	Subsidy Per Pass	Cost Per Pass	Farebox Recovery
Weekday	4.17	\$11.39	\$47.46	1.0%
Saturday	-	-	-	-
Total	4.17	\$11.39	\$47.46	1.0%



95
YELLOW



Pre Changes: 7/1/2011-1/7/2012



Post Changes: 1/9/2012-6/30/2012

Yellow Route 95 - Highway 95 South - Yuma Palms Regional Center to San Luis via Somerton, Cocopah Casino, and Gadsden. This route operates every 60 minutes, Monday through Friday between 6:30 a.m. and 7:30 p.m. and on Saturday between 9:30 a.m. and 6:30 p.m. This route previously operated Monday through Saturday from 5:55 am to 5:55 pm every 75 minutes.

	Passengers			Revenue Hours			Revenue Miles		
	Annual	Avg Monthly	Ave Daily	Annual	Avg Monthly	Ave Daily	Annual	Avg Monthly	Ave Daily
Weekday	138,489	11,541	535	6,251	521	24	153,697	12,808	593
Saturday	17,473	1,456	330	1,369	114	26	17,454	1,454	329
Total	155,962	12,997	864	7,620	635	50	171,151	14,263	923

	Operating Costs			Passenger Revenue			Operating Subsidy		
	Annual	Avg Monthly	Ave Daily	Annual	Avg Monthly	Ave Daily	Annual	Avg Monthly	Ave Daily
Weekday	\$324,545	\$27,045	\$1,253	\$182,563	\$15,214	\$705	\$141,982	\$11,832	\$548
Saturday	\$72,761	\$6,063	\$2,746	\$26,401	\$2,200	\$498	\$46,360	\$3,863	\$875
Total	\$397,306	\$33,109	\$3,999	\$208,963	\$17,414	\$1,203	\$188,343	\$15,695	\$1,423

	Pass Per Rev Hour	Subsidy Per Pass	Cost Per Pass	Farebox Recovery
Weekday	22.15	\$2.34	\$51.92	56.3%
Saturday	12.76	\$4.16	\$53.14	36.3%
Total	20.47	\$2.55	\$52.14	52.6%



5
BLUE



Post Changes: 6/1/2012-6/30/2012

Blue Route 5 - Quechan Shuttle - Counter Clockwise Loop throughout the Quechan/Fort Yuma Indian Reservation serving Paradise Casino, Quechan Casino Resort and Winterhaven, CA. This route operates every 60 minutes, Monday through Friday between 7:10 a.m. and 7:00 p.m. and on Saturday between 9:10 a.m. and 6:00 p.m.

	Passengers			Revenue Hours			Revenue Miles		
	Annual	Avg Monthly	Ave Daily	Annual	Avg Monthly	Ave Daily	Annual	Avg Monthly	Ave Daily
Weekday	617	617	39	249	249	16	6,476	6,476	404
Saturday	47	47	12	39	39	10	1,028	1,028	257
Total	664	664	50	289	289	25	7,504	7,504	661

	Operating Costs			Passenger Revenue			Operating Subsidy		
	Annual	Avg Monthly	Ave Daily	Annual	Avg Monthly	Ave Daily	Annual	Avg Monthly	Ave Daily
Weekday	\$11,800	\$11,800	\$738	\$625	\$625	\$39	\$11,175	\$11,175	\$698
Saturday	\$1,863	\$1,864	\$466	\$84	\$84	\$21	\$1,780	\$1,780	\$445
Total	\$13,664	\$13,664	\$1,203	\$709	\$709	\$60	\$12,955	\$12,955	\$1,143

	Pass Per Rev Hour	Subsidy Per Pass	Cost Per Pass	Farebox Recovery
Weekday	2.47	\$19.13	\$47.30	5.03%
Saturday	1.19	\$39.65	\$47.30	4.5%
Total	2.30	\$20.58	\$47.30	5.2%



Pre Changes: 7/1/2011-1/7/2012

Grey Route - West Cocopah Reservation to Cocopah Casino via Cocopah East Reservation. This route operates every 75 minutes, Monday through Friday between 7:00 a.m. and 5:00 p.m. This route was replaced by Violet Route 7.

	Passengers			Revenue Hours			Revenue Miles		
	Annual	Avg Monthly	Ave Daily	Annual	Avg Monthly	Ave Daily	Annual	Avg Monthly	Ave Daily
Weekday	9,470	1,578	73	1,452	242	11	21,240	3,540	164
Saturday	-	-	-	-	-	-	-	-	-
Total	9,470	1,578	73	1,452	242	11	21,240	3,540	164

	Operating Costs			Passenger Revenue			Operating Subsidy		
	Annual	Avg Monthly	Ave Daily	Annual	Avg Monthly	Ave Daily	Annual	Avg Monthly	Ave Daily
Weekday	\$80,831	\$13,472	\$624	\$98	\$16	\$1	\$80,733	\$13,455	\$623
Saturday	-	-	-	-	-	-	-	-	-
Total	\$80,831	\$13,472	\$624	\$98	\$16	\$1	\$80,733	\$13,455	\$623

	Pass Per Rev Hour	Subsidy Per Pass	Cost Per Pass	Farebox Recovery
Weekday	6.52	\$5.54	\$55.65	0.1%
Saturday	-	-	-	-
Total	6.52	\$8.54	\$55.65	0.1%



COLLEGE
SHUTTLE



Pre Changes: 7/5/2011 - 12/15/2011

College Shuttle – Service From Yuma Palms Regional Center to Arizona Western College/Northern Arizona University/University of Arizona. *(Operates when college is in session)*

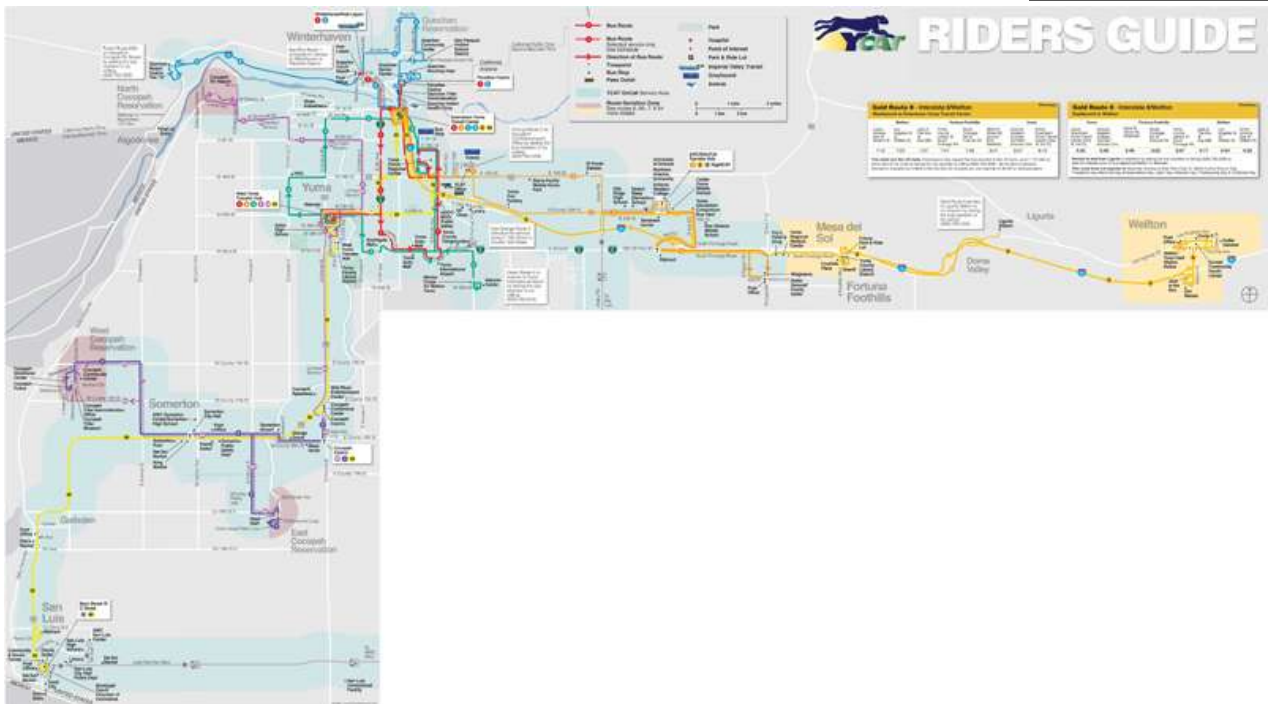
	Passengers			Revenue Hours			Revenue Miles		
	Annual	Avg Monthly	Ave Daily	Annual	Avg Monthly	Ave Daily	Annual	Avg Monthly	Ave Daily
Weekday	2,823	471	22	188	31	1	6,317	1,053	49
Saturday	-	-	-	-	-	-	-	-	-
Total	2,823	235	22	188	31	1	6,317	1,053	49

	Operating Costs			Passenger Revenue			Operating Subsidy		
	Annual	Avg Monthly	Ave Daily	Annual	Avg Monthly	Ave Daily	Annual	Avg Monthly	Ave Daily
Weekday	\$10,589	\$1,765	\$82	\$660	\$110	\$5	\$9,929	\$1,655	\$77
Saturday	-	-	-	-	-	-	-	-	-
Total	\$10,589	\$1,765	\$82	\$660	\$110	\$5	\$9,929	\$1,655	\$77

	Pass Per Rev Hour	Subsidy Per Pass	Cost Per Pass	Farebox Recovery
Weekday	15.02	\$3.75	\$56.23	6.2%
Saturday	-	-	-	-
Total	15.02	\$3.75	\$56.33	6.2%



NIGHT CAT & SPECIAL SERVICES



Post Changes: 1/9/2012 – 6/30/2012

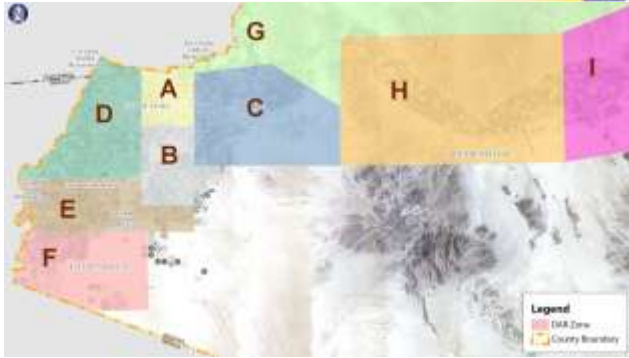
NightCAT - Arizona Western College/Northern Arizona University/University of Arizona night time shuttle. (Operates when college is in session)

	Passengers			Revenue Hours			Revenue Miles		
	Annual	Avg Monthly	Ave Daily	Annual	Avg Monthly	Ave Daily	Annual	Avg Monthly	Ave Daily
Weekday	814	136	6	185	31	1	4,296	716	33
Saturday*	11	2	0	59	10	2	1,404	234	53
Total	825	69	6	244	20	3	5,700	950	86

	Operating Costs			Passenger Revenue			Operating Subsidy		
	Annual	Avg Monthly	Ave Daily	Annual	Avg Monthly	Ave Daily	Annual	Avg Monthly	Ave Daily
Weekday	\$8,762	\$1,931	\$68	\$11	\$2	\$0	\$8,751	\$1,458	\$68
Saturday*	\$2,822	\$470	-	\$10	\$2	\$0	\$2,812	\$469	\$106
Total	\$11,584	\$1,931	\$68	\$21	\$4	\$0	\$11,563	\$1,927	\$174

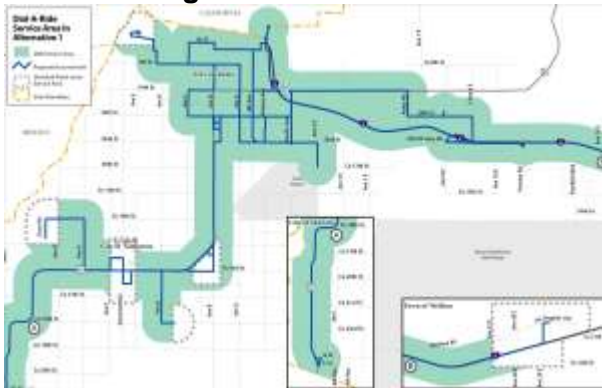
	Pass Per Rev Hour	Subsidy Per Pass	Cost Per Pass	Farebox Recovery
Weekday	4.41	\$10.76	\$47.46	0.1%
Saturday*	0.19	\$256.59	\$47.54	0.4%
Total	3.38	\$14.04	\$47.48	0.2%

*NightCAT and Special Services were reported together. In January & March 2012, YCAT provided services for Rural Transportation Summit and MCAS Air Show respectively. The ridership data on Saturday reflects the Air Show.



GREATER YUMA AREA
DIAL-A-RIDE

Pre Changes: 7/1/2011-1/7/2012



Post Changes: 1/9/2012 – 6/30/2012

Greater Yuma Area Dial-A-Ride - ADA complementary paratransit service for persons with disabilities unable to ride YCAT buses due to a disability. Service is available from 5:50 a.m. to 7:30 p.m., Monday through Friday, 9:15 a.m. to 6:30 p.m., Saturday. This service previously carried WACOG, non ADA persons with disabilities and senior passengers.

	Passengers			Revenue Hours			Revenue Miles		
	Annual	Avg Monthly	Ave Daily	Annual	Avg Monthly	Ave Daily	Annual	Avg Monthly	Ave Daily
Weekday	10,759	897	42	6,894	574	27	70,402	5,867	272
Saturday	3,244	270	61	565	11	11	6,801	567	128
Total	14,003	1,167	103	7,459	585	37	77,203	6,434	400

	Operating Costs			Passenger Revenue			Operating Subsidy		
	Annual	Avg Monthly	Ave Daily	Annual	Avg Monthly	Ave Daily	Annual	Avg Monthly	Ave Daily
Weekday	\$ 314,770.53	\$ 26,230.88	\$ 1,215.33	\$21,349.00	\$ 1,779.08	\$ 82.43	293,422	24,452	1,133
Saturday	\$ 93,225.32	\$ 7,768.78	\$ 1,758.97	\$ 6,394.00	\$ 532.83	\$ 120.64	86,831	7,236	1,638
Total	\$ 407,995.85	\$ 3,999.65	\$ 2,974.30	\$27,743.00	\$ 2,311.92	\$ 203.07	380,253	31,688	2,771

	Passenger Per Revenue Hr	Subsidy Per Passenger	Cost Per Rev Hr	Farebox Recovery
Weekday	1.56	\$ 29.26	\$ 45.66	6.8%
Saturday	5.74	\$ 28.73	\$164.86	6.9%
Total	1.88	\$ 29.14	\$ 54.70	6.8%